

C.A. Technologies *Jaguar* 300 Series

GRAVITY FEED SPRAY GUN PRODUCT INFORMATION



HVLP AIR CAP AND FLUID NOZZLE CHART

MODEL NO.	AIR CAPS	*MAX GUN INLET PRESS. FOR HVLP	SIDEPORT CONTROL	SCFM @ MAX. GUN INLET	AIR CAP RING	AVAILABLE FLUID NOZZLES TIPS	NEEDLES / (marking on needle)
J300H	23-1010	45	60-1502 (#2)	13.5	Included	33-0210 1.0mm (.040")	40-1310 (310)
	23-1013	45		13.5		33-0213 1.3mm (.052")	40-1313 (313)
	23-1014	45		13.5		33-0214 1.4mm (.055")	40-1314 (314)
	23-1015	45		13.5		33-0215 1.5mm (.059")	40-1315 (315)
	23-1017	45		13.5		33-0217 1.7mm (.070")	40-1317 (317)
	23-1019	45		13.5		33-0219 1.9mm (.075")	40-1319 (319)
	23-1022	45		13.5		33-0222 2.2mm (.086")	40-1322 (322)

*Note: Air cap test gages are available to confirm HVLP compliance.

CONVENTIONAL AIR CAP AND FLUID NOZZLE CHART

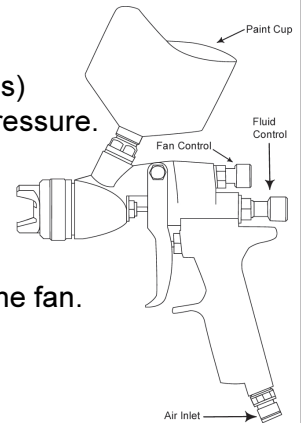
MODEL NO.	AIR CAPS	*MAX GUN INLET PRESS. FOR HVLP	SIDEPORT CONTROL	SCFM @ MAX. GUN INLET	AIR CAP RING	AVAILABLE FLUID NOZZLES TIPS	NEEDLES / (marking on needle)
J300C	23-2013	45-55	60-1500	9-10.7	Included	33-0613 1.3mm (.051")	40-1313 (313)
	23-2014	45-55		9-10.7		33-0614 1.4mm (.055")	40-1314 (314)
	23-2016	45-55		9-10.7		33-0616 1.6mm (.063")	40-1315 (315)

Actual fluid nozzle and air cap combinations are determined by application (see application chart page 4)

Operation and maintenance instructions for *Jaguar* spray guns

Operation

1. Connect air supply hose at handle of gun (see page 1 for suggested gun inlet pressures)
2. The optional air control valve built into the gun handle can be used to adjust gun inlet pressure.
3. Screw the paint cup onto the gun's gravity feed fluid inlet.
4. Fluid flow can be controlled using the fluid control knob, this restricts flow by limiting needle travel. It is best to control fluid flow by proper selection of fluid orifice size and use the fluid control knob to "fine tune flow rate".
5. Fan width can be adjusted using fan control knob. Turning the knob clockwise narrow the fan.



Maintenance

IMPORTANT! Routine cleaning and maintenance is essential to insure proper gun operation. Several states prohibit spraying solvent into the atmosphere and require the use of a covered gun cleaner.

1. If a gun cleaner is being used, connect and clean the gun in the gun cleaner according to the manufactures instructions.
2. If a gun cleaner is not being used:
First clean the gravity feed cup thoroughly, then spray clean solvent thru the gun until clean.

NOTE: Gun head disassembly is not recommended for normal cleaning and maintenance.

Gun head disassembly and reassembly instructions

Gun Head Disassembly

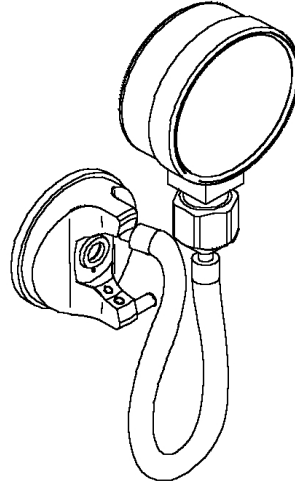
To remove the nozzle carrier (4) and air cap adapter (5):

1. Remove the air cap (1), fluid nozzle tip (2), fluid nozzle body (3), and needle (14)
2. Remove the needle seal cartridge (15)
3. Loosen the locknut (9) and remove fluid inlet (10) using an 11/16" wrench.
4. The nozzle carrier and air cap adapter will now slide forward from the gun handle (11).

Gun head reassembly

1. Install a new o-ring (7) on the air cap adapter
2. For model J300H only, install a new o-ring 98-8026 onto the air cap adapter
3. Install the thread locknut (9) onto the fluid inlet as far as possible.
4. Install a new seal (8) onto the fluid inlet.
5. Slide the nozzle carrier (4) into air cap adapter (5) and insert into the gun body as far as possible. Be sure the nozzle carrier extends into the hole at the back of the gun head. Install the needle seal (15) but do not tighten.
6. Rotate the nozzle carrier until the fluid inlet port in the nozzle carrier is aligned with the threaded hole in the gun body. While in this position, insert the fluid inlet (10) and hand tighten firmly. **DO NOT WRENCH TIGHTEN UNTIL STEP 8.**
7. Tighten the needle seal (15) to approx. 12 ft-lb. torque.
8. Tighten the fluid inlet (10) to approx. 25 ft-lb. torque.
9. Tighten the locknut (9) to approx. 33 ft-lb. torque.

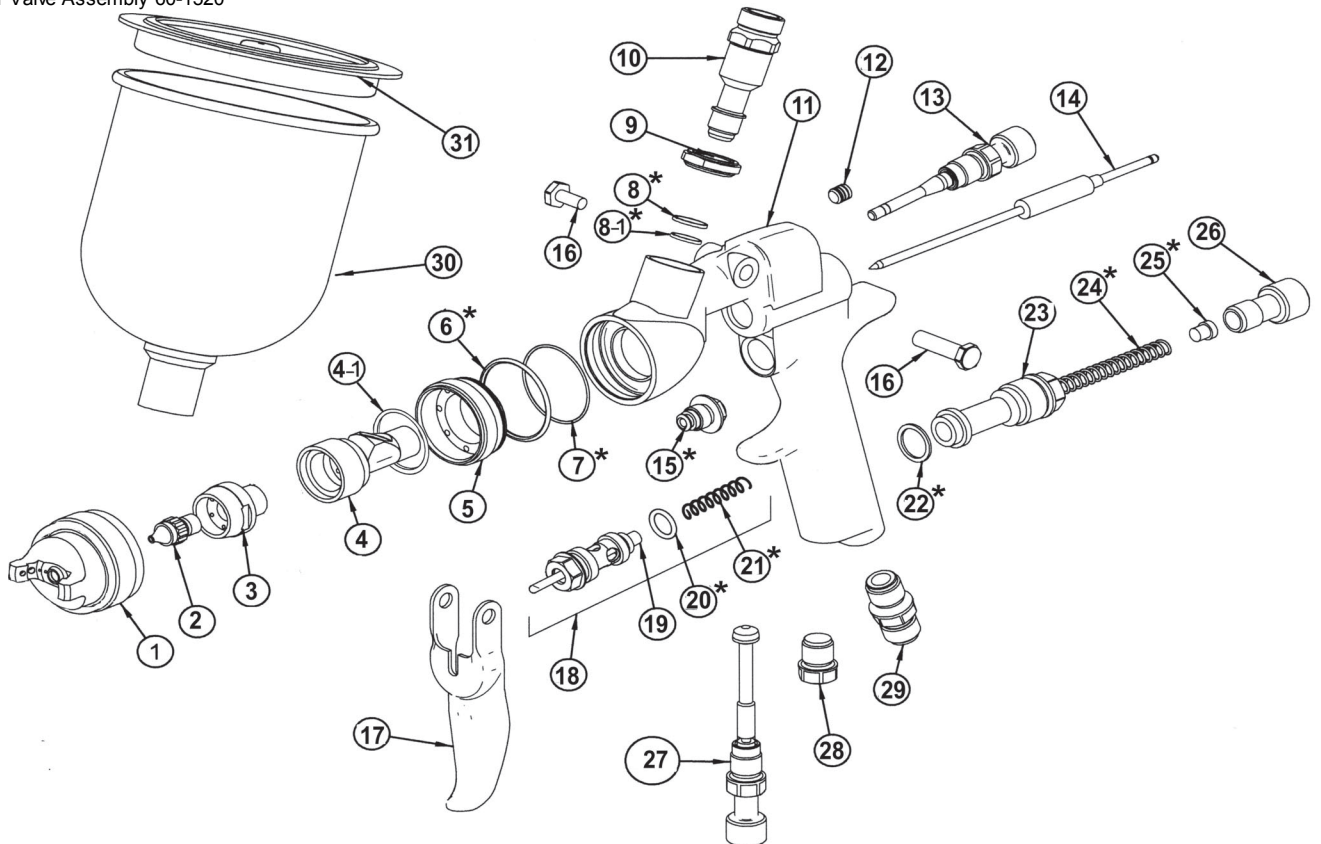
ITEM NUMBER	PART NUMBER	DESCRIPTION
1	See Air Cap Chart	Air Cap (see page 1)
2	See Nozzle Chart	Fluid Nozzle Tip
3	33-1202	Fluid Nozzle Body (for HVLP)
	33-2201 (CONV.)	Fluid Nozzle Body (for CONV.)
4	60-J31H (HVLP)	Nozzle Carrier (HVLP)
	60-J31C (CONV.)	Nozzle Carrier (CONV.)
4-1	60-123	Carrier Seal
5	60-34H (HVLP)	Air Cap Adapter (HVLP)
	60-32C (CONV.)	Air Cap Adapter (CONV.)
6	98-8026	O-Ring*
7	See KIT NO. 10-105	O-Ring*
8	See KIT NO. 10-105	Seal*
8-1	See KIT NO. 10-105	Seal*
9	60-118	Locknut
10	60-127	Fluid Inlet Fitting
11	60-1113	JAGUAR Gun body HVLP
	60-1123	JAGUAR Gun body CONV.
12	90-0109	Allen Plug
13	60-1502	Fan Control Assembly (HVLP)
	60-1500	Fan Control Assembly (CONV.)
14	See Air Cap Chart	Fluid Needle
15	60-1400	Needle Seal Cartridge*
16	60-1033	Trigger Pivot Set
17	60-2101	Trigger
18	60-1520	Air Valve Assembly
19	60-302	Air Valve Poppet
20	See KIT NO. 10-105	Seal*
21	See KIT NO. 10-105	Air Valve Spring*
22	See KIT NO. 10-105	Seal*
23	60-201	Rear Bushing
24	See KIT NO. 10-105	Needle Return Spring
25	See KIT NO. 10-105	Spring Seat
26	60-202	Fluid Control Knob
27	60-1510	Air Control Knob (Optional)
28	60-122	Plug
29	60-104	Air Inlet Fitting
30	51-401 standard 750cc	Gravity Feed Cup (aluminum)
	51-400 optional 750cc	Gravity Feed Cup (plastic)
	51-403 optional 1 liter	Gravity Feed Cup (aluminum)
31	51-418	Gravity Cup Lid



HVLP AIR CAP TEST GAUGES	
FOR J300H GUNS	23-1010-G
	23-1013-G
	23-1014-G
	23-1015-G
	23-1017-G
	23-1019-G
	23-1022-G

* Included in KIT NO. 10-105

** Included with Air Valve Assembly 60-1520



Jaguar NOZZLE SELECTION CHART

Material	ORIFICE SIZE	J300H HVLP	J300C CONVENTIONAL
Filler	1.7	45 PSI @ 13.5 cfm	45-55 PSI @ 9-10.5 cfm
Primer/ Washprimer/Epoxy	1.4-1.7	45 PSI @ 13.5 cfm	45-55 PSI @ 9-10.5 cfm
Sealer	1.4-1.7	45 PSI @ 13.5 cfm	45-55 PSI @ 9-10.5 cfm
Single Stage	1.3-1.4	45 PSI @ 13.5 cfm	45-55 PSI @ 9-10.5 cfm
Basecoat	1.3-1.4	45 PSI @ 13.5 cfm	45-55 PSI @ 9-10.5 cfm
Clearcoat	1.3-1.4	45 PSI @ 13.5 cfm	45-55 PSI @ 9-10.5 cfm
High Solids Clears	1.4-1.5	45 PSI @ 13.5 cfm	45-55 PSI @ 9-10.5 cfm

KITS FOR *Jaguar* GUNS J300H & J300C

HVLP KITS	ORIFICE SIZE	AIR CAP	ORIFICE (TIP)	NEEDLE
JK1010	1.0	23-1010	33-0210	40-1310
JK1013	1.3	23-1013	33-0213	40-1313
JK1014	1.4	23-1014	33-0214	40-1314
JK1015	1.5	23-1015	33-0215	40-1315
JK1017	1.7	23-1017	33-0217	40-1317
JK1019	1.9	23-1019	33-0219	40-1319
JK1022	2.2	23-1022	33-0222	40-1322

CONVENTIONAL KITS	ORIFICE SIZE	AIR CAP	ORIFICE (TIP)	NEEDLE
JK1010	1.0	23-2010	33-0610	40-1310
JK2013	1.3	23-2013	33-0613	40-1313
JK2014	1.4	23-2014	33-0614	40-1314
JK2016	1.6	23-2016	33-0615	40-1315